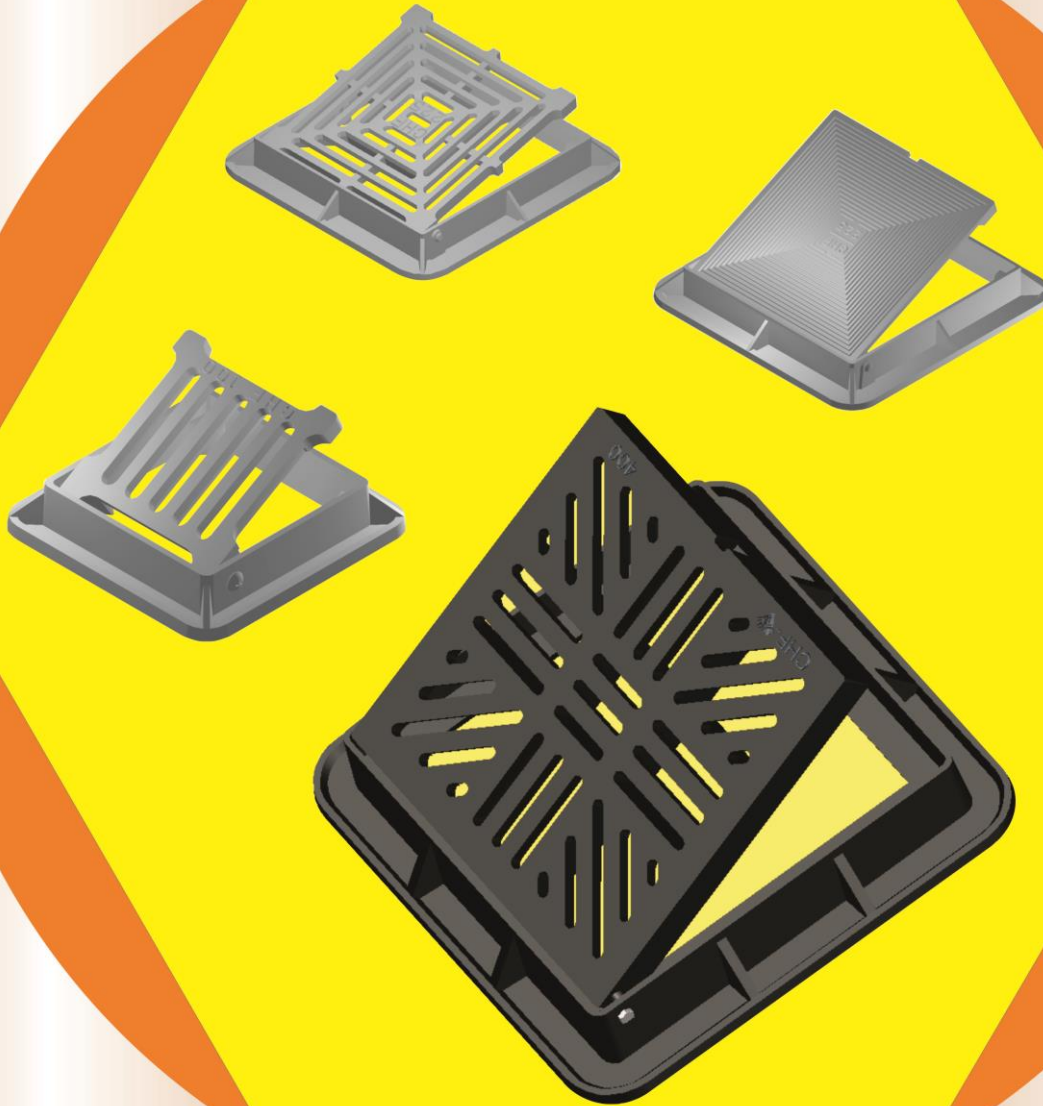


**CHF<sup>®</sup> Eco-Hinged Grating & Cover with Frame**  
鑄鐵有鉸梳/密山 (隔氣井用)

承重B125及20Ton

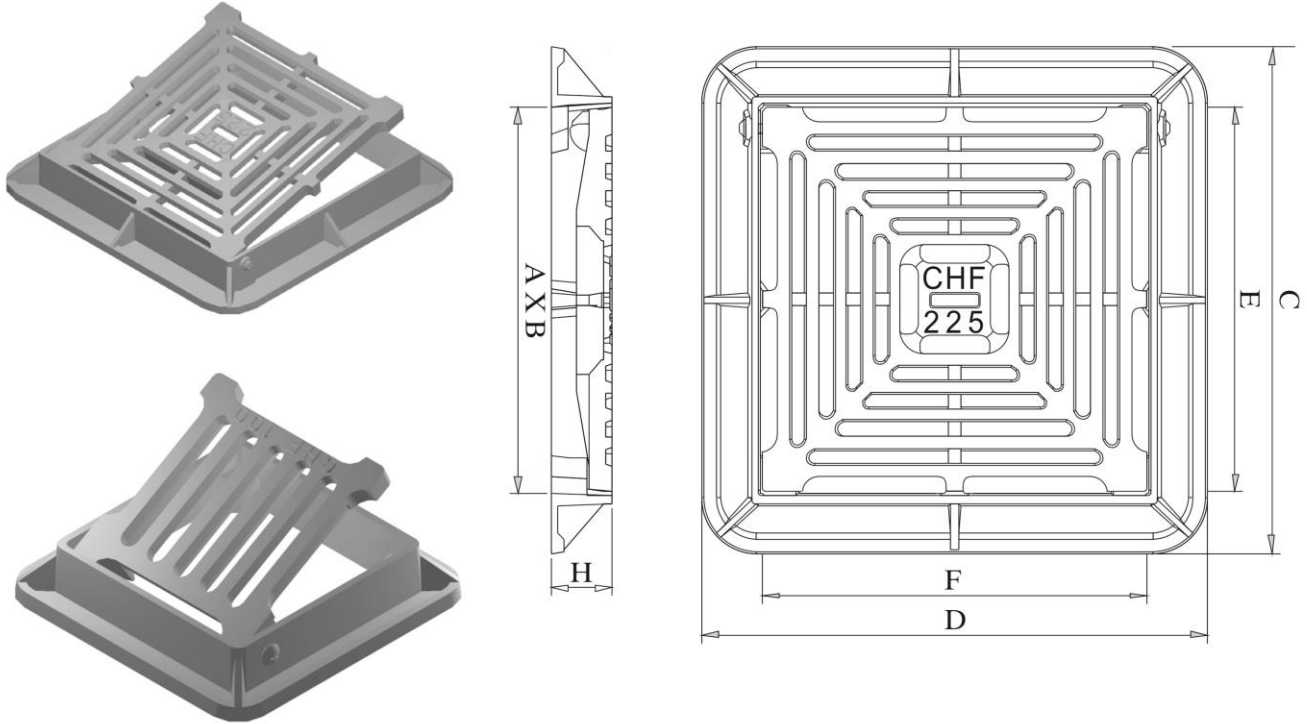


**CHEUNG HING FOUNDRY (HK) LIMITED**  
Address : 299, Pak Sha Tsuen,  
Kung Um Road, Yuen Long, Hong Kong  
Tel : (852) 2447-1262 Fax : (852) 2447-0198

**祥興鑄鐵有限公司**  
地址：香港 元朗公庵路 白沙村 299 號  
Email : [chf@chfhk.com](mailto:chf@chfhk.com) <http://www.chfhk.com>

# CHF<sup>®</sup> Eco-Ductile Iron Hinged Grating with Frame for OTG

## 球鐵有較承重梳齒 (隔氣井地台去水用) B125



(ELA100 only)

BSEN 124 B125					
Code No. 編號	Clear Opening 內孔尺寸 A X B (mm)	Over Base Size 底框尺寸 C X D (mm)	Cover Size 蓋面尺寸 E X F (mm)	Height 高度 H (mm)	Material 材質
ELA150	151 X 151	200 X 200	151 X 151	30	** Ductile Iron To BS EN 1563 Grade 500-7
ELA200	201 X 201	265 X 265	201 X 201	34	
* ELA225	226 X 226	300 X 300	226 X 226	36	
* ELA250	251 X 251	315 X 315	251 X 251	38	
ELA300	301 X 301	374 X 374	301 X 301	40	

\*\* Material- As per the requirement of " BSEN 124 ", HKSAR

Cheung Hing Foundry (HK) Limited reserves the rights to modify the specifications of the products in this catalog without prior notice.



祥興鑄鐵有限公司  
CHEUNG HING FOUNDRY (HK) LIMITED

# CHF<sup>®</sup> Eco-Ductile Iron Hinged Grating with Frame for OTG

## 球鐵有較承重梳齒 (隔氣井地台去水用) B125

Standard: BSEN124:1994

Class	Test load (kN)	Place of installation
A	15	Suitable for areas which can be used by pedestrians and pedal cyclists.
B	125	Suitable for footways, pedestrian areas and comparable areas, car parks or car parking decks.



HOKLAS Endorsed Test Certificates

**CASTCO** 佳力高試驗中心有限公司 香港粉嶺安居街33號 33, On Kui Street, Fanling, Hong Kong. Tel: 2677 2138  
**CASTCO TESTING CENTRE LTD.** 香港粉嶺安全街29A號 29A, On Chuen Street, Fanling, Hong Kong. Fax: 2677 0351  
 E-mail: castco@netvigator.com Website: www.castco.com.hk

Test Certificate  
 Measurement of Permanent Set & Loading Test of Manhole Covers, Gully Gratings  
 [Tested to BS EN 124 : 1994, Cl. 8 (AMD 8587)]

Date of issue : 09 January 2013  
 Page 1A of 1 page(s)  
 Castco LRN : DP0121204-030 MISCEL

**Details as supplied by customer**  
 Customer: Cheung Hing Foundry (HK) Limited  
 Contract No.: -- Title: --  
 Sample description: 225mm Ductile Iron Hinged Grating  
 Manufacturer: Cheung Hing Foundry (HK) Limited Brand: CHF

**Laboratory Test Result**  
 Date Received: 04 December 2012 Date Tested: 20 December 2012

Specimen No.	Specimen Description	Clear opening (mm)	Size of test block (mm)	Measurement of permanent set			Application of the test load (Test load maintained for 30 sec.)		
				2/3 of the test load applied (kN)	Permanent set of cover/grating (mm)	Permanent set test result	Load applied (kN)	Loading test result	Observation
DP0121204-030	225mm Ductile Iron Hinged Grating	225	φ150	--	--	--	125	Passed	N/V

**Remarks :-**  
 1. Legend : FC - Fracture at cover FF - Fracture at frame  
 2. Test results relate only to the specimen tested.  
 3. Compliance of the test results to the specification is an opinion of the laboratory and is not covered under the HOKLAS accreditation.  
 4. Test results of the sample comply with the requirement of BS EN 124 : 1994, Cl. 8 (Excluding Cl.8.3.1)(AMD 8587).  
 5. Customer instructed to waive the permanent set testing.  
 6. This test report supersedes previous test report of CASTCO.  
 Checked by: Laboratory Supervisor  
 Form No. : FIP Manhole\_EN124\_T 01 08/10/2010

**CASTCO** 佳力高試驗中心有限公司 香港粉嶺安居街33號 33, On Kui Street, Fanling, Hong Kong. Tel: 2677 2138  
**CASTCO TESTING CENTRE LTD.** 香港粉嶺安全街29A號 29A, On Chuen Street, Fanling, Hong Kong. Fax: 2677 0351  
 E-mail: castco@netvigator.com Website: www.castco.com.hk

Test Certificate  
 Measurement of Permanent Set & Loading Test of Manhole Covers, Gully Gratings  
 [Tested to BS EN 124 : 1994, Cl. 8 (AMD 8587)]

Date of issue : 11 March 2013  
 Page 1 of 1 page(s)  
 Castco LRN : DP0130227-042 MISCEL

**Details as supplied by customer**  
 Customer: Cheung Hing Foundry (HK) Limited  
 Contract No.: -- Title: --  
 Sample description: 250mm Ductile Iron Hinged Grating

**Laboratory Test Result**  
 Date Received: 27 February 2013 Date Tested: 04 March 2013

Specimen No.	Specimen Description	Clear opening (mm)	Size of test block (mm)	Measurement of permanent set			Application of the test load (Test load maintained for 30 sec.)		
				2/3 of the test load applied (kN)	Permanent set of cover/grating (mm)	Permanent set test result	Load applied (kN)	Loading test result	Observation
DP0130227-042	250mm Ductile Iron Hinged Grating	250	φ150	--	--	--	125	Passed	N/V

**Remarks :-**  
 1. Legend : FC - Fracture at cover FF - Fracture at frame N/V - No visible fracture.  
 2. Test results relate only to the specimen tested.  
 3. Compliance of the test results to the specification is an opinion of the laboratory and is not covered under the HOKLAS accreditation.  
 4. Test results of the sample comply with the requirement of BS EN 124 : 1994, Cl. 8 (Excluding Cl.8.3.1)(AMD 8587).  
 5. Customer instructed to waive the permanent set testing.  
 6. Brand : CHF  
 Checked by: Assistant Technical Officer  
 Form No. : FIP Manhole\_EN124\_T 01 08/10/2010

2. Permissible permanent set as given in BSEN 124 : 1994 AMD 8587 Table 8.  
 a) For class A15 and B125 :  $\frac{CO}{100}$ , OR  $\frac{CO}{50}$  when CO < 450mm.  
 b) For class C250 up to F900 :  $\frac{CO}{100}$ , OR 1mm max. when CO < 300mm. (When secured according to 7.8a) or 7.8c)  
 c) For class C250 up to F900 :  $\frac{CO}{100}$ , OR 1mm max. when CO < 500mm. (When secured according to 7.8b)  
 8. Manufacturer : Cheung Hing Foundry (HK) Limited  
 9. Sample Submitted by : Asia Development (HK) Limited  
 Approved signatory : Quality Manager  
 End of Report

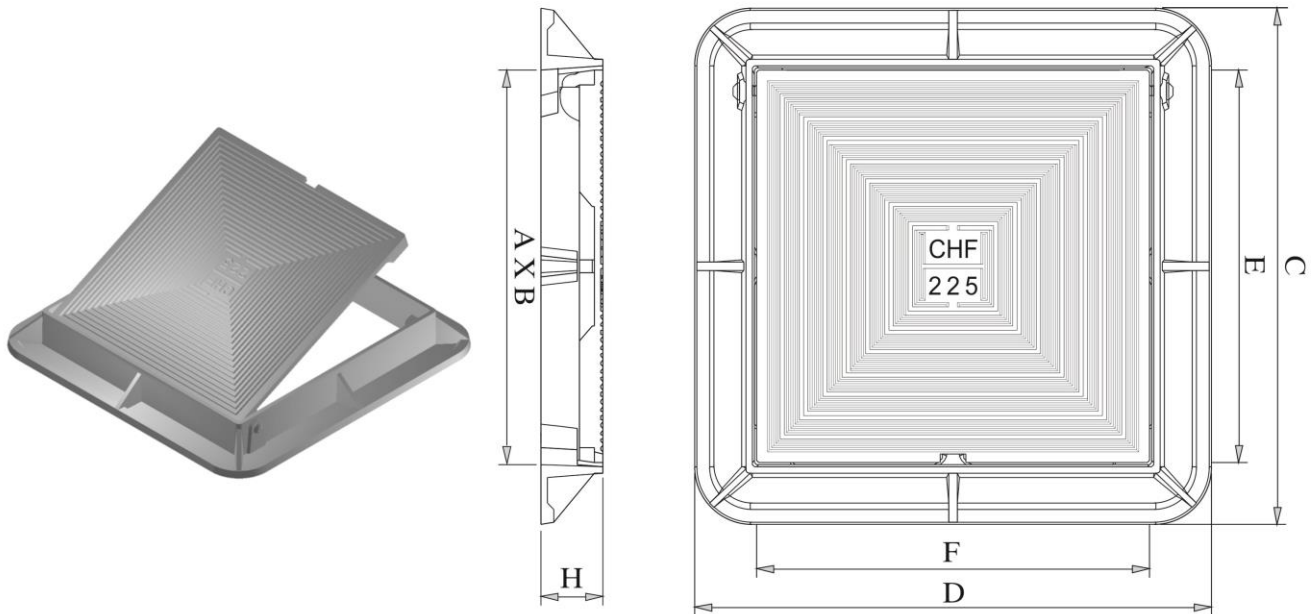
Hong Kong Accreditation Service (HKAS) has accredited this laboratory under the Hong Kong Laboratory Accreditation Scheme (HOKLAS) for specific laboratory activities as listed in the HOKLAS Directory of Accredited Laboratories. The results shown in this report were determined by this laboratory in accordance with its terms of accreditation. This report shall not be reproduced without prior written approval from this laboratory. This laboratory is accredited in accordance with the recognised international standard ISO/IEC 17025:2005. This accreditation demonstrates technical competence for a defined scope and the operation of a laboratory quality management system (refer joint ISO-ILAC-AF Communique dated January 2009)



祥興鑄鐵有限公司  
**CHEUNG HING FOUNDRY (HK) LIMITED**

# CHF<sup>®</sup> Eco-Ductile Iron Hinged Cover with Frame for STG/BIGT

球鐵有較承重密冚 (隔氣井用) B125



BSEN 124 B125					
Code No. 編號	Clear Opening 內孔尺寸 A X B (mm)	Over Base Size 底框尺寸 C X D (mm)	Cover Size 蓋面尺寸 E X F (mm)	Height 高度 H (mm)	Material 材質
ELB150	151 X 151	200 X 200	151 X 151	30	** Ductile Iron To BS EN 1563 Grade 500-7
ELB200	201 X 201	265 X 265	201 X 201	34	
* ELB225	226 X 226	300 X 300	226 X 226	36	
ELB250	251 X 251	315 X 315	251 X 251	38	
* ELB300	301 X 301	374 X 374	301 X 301	40	

\*\* Material- As per the requirement of " BSEN 124 ", HKSAR

Cheung Hing Foundry (HK) Limited reserves the rights to modify the specifications of the products in this catalog without prior notice.



祥興鑄鐵有限公司  
CHEUNG HING FOUNDRY (HK) LIMITED

# CHF<sup>®</sup> Eco-Ductile Iron Hinged Cover with Frame for STG/BIGT

## 球鐵有較承重密冚 (隔氣井用) B125

Standard: BSEN124:1994

Class	Test load (kN)	Place of installation
A	15	Suitable for areas which can be used by pedestrians and pedal cyclists.
B	125	Suitable for footways, pedestrian areas and comparable areas, car parks or car parking decks.



HOKLAS Endorsed Test Certificates

**佳力高試驗中心有限公司**  
CASTCO TESTING CENTRE LTD.

香港粉嶺安原街33號 33, On Kui Street, Fanling, Hong Kong. Tel: 2677 2138  
香港粉嶺安全街29A號 29A, On Chuen Street, Fanling, Hong Kong. Fax: 2677 0351  
E-mail: castco@netnavigator.com Website: www.castco.com.hk

Test Certificate  
Measurement of Permanent Set & Loading Test of Manhole Covers, Gully Gratings  
[Tested to BS EN 124 : 1994, Cl. 8 (AMD 8587)]

Date of issue : 09 January 2013  
Page 1A of 1 page(s)  
Castco LRN : DP0121204-031 MISCEL

**Details as supplied by customer**  
Customer: Cheung Hing Foundry (HK) Limited  
Contract No.: -- Title: --  
Sample description : 300mm Ductile Iron Hinged Cover  
Manufacturer : Cheung Hing Foundry (HK) Limited Brand : CHF

**Laboratory Test Result**  
Date Received: 04 December 2012 Date Tested: 20 December 2012

Specimen No.	Specimen Description	Clear opening (mm)	Size of test block (mm)	Measurement of permanent set			Application of the test load (Test load maintained for 30 sec.)		
				2/3 of the test load applied (kN)	Permanent set of cover/grating (mm)	Permanent set test result	Load applied (kN)	Loading test result	Observation
DP0121204-031	300mm Ductile Iron Hinged Cover	300	250 x 150	--	--	--	125	Passed	N/V

**Remarks :-**  
1. Legend : FC - Fracture at cover FF - Fracture at frame  
3. Test results relate only to the specimen tested.  
4. Compliance of the test results to the specification is an opinion of the laboratory and is not covered under the HOKLAS accreditation.  
5. Test results of the sample comply with the requirement of BS EN 124 : 1994, Cl. 8 (Excluding Cl.8.3.1)(AMD 8587).  
6. Customer instructed to waive the permanent set testing.  
8. This test report supersedes previous test report of Castco Ltd.

Checked by:   
SIT KWAN NING  
Laboratory Supervisor

Form No. : PIP Manhole\_EN124\_T 01 08/10/2010

**佳力高試驗中心有限公司**  
CASTCO TESTING CENTRE LTD.

香港粉嶺安原街33號 33, On Kui Street, Fanling, Hong Kong. Tel: 2677 2138  
香港粉嶺安全街29A號 29A, On Chuen Street, Fanling, Hong Kong. Fax: 2677 0351  
E-mail: castco@netnavigator.com Website: www.castco.com.hk

Test Certificate  
Measurement of Permanent Set & Loading Test of Manhole Covers, Gully Gratings  
[Tested to BS EN 124 : 1994, Cl. 8 (AMD 8587)]

Date of issue : 11 March 2013  
Page 1 of 1 page(s)  
Castco LRN : DP0130227-045 MISCEL

**Details as supplied by customer**  
Customer: Cheung Hing Foundry (HK) Limited  
Contract No.: -- Title: --  
Sample description : 225mm Ductile Iron Hinged Cover

**Laboratory Test Result**  
Date Received: 27 February 2013 Date Tested: 04 March 2013

Specimen No.	Specimen Description	Clear opening (mm)	Size of test block (mm)	Measurement of permanent set			Application of the test load (Test load maintained for 30 sec.)		
				2/3 of the test load applied (kN)	Permanent set of cover/grating (mm)	Permanent set test result	Load applied (kN)	Loading test result	Observation
DP0130227-045	225mm Ductile Iron Hinged Cover	225	φ150	--	--	--	125	Passed	N/V

**Remarks :-**  
1. Legend : FC - Fracture at cover FF - Fracture at frame N/V - No visible fracture.  
3. Test results relate only to the specimen tested.  
4. Compliance of the test results to the specification is an opinion of the laboratory and is not covered under the HOKLAS accreditation.  
5. Test results of the sample comply with the requirement of BS EN 124 : 1994, Cl. 8 (Excluding Cl.8.3.1)(AMD 8587).  
6. Customer instructed to waive the permanent set testing.  
7. Brand : CHF  
2. Permissible permanent set as given in BS EN 124 : 1994 AMD 8587 Table 8.  
a) For class A15 and B125 :  $\frac{CO}{100}$ , OR  $\frac{CO}{50}$  when CO ≤ 450mm.  
b) For class C250 up to F900 :  $\frac{CO}{250}$ , OR 1mm max. when CO < 300mm. (When secured according to 7.8b)  
c) For class C250 up to F900 :  $\frac{CO}{250}$ , OR 1mm max. when CO < 500mm. (When secured according to 7.8b)  
8. Manufacturer : Cheung Hing Foundry (HK) Limited  
9. Sample Submitted by : Asia Development (HK) Limited

Checked by:   
FU HO MAN  
Assistant Technical Officer

Approved signatory:   
CHO TZE WING  
C. Eng., M.KEJIS, MISCE  
Quality Manager

Form No. : PIP Manhole\_EN124\_T 01 08/10/2010

Hong Kong Accreditation Service (HKAS) has accredited this laboratory under the Hong Kong Laboratory Accreditation Scheme (HOKLAS) for specific laboratory activities as listed in the HOKLAS Directory of Accredited Laboratories. The results shown in this report were determined by this laboratory in accordance with its terms of accreditation. This report shall not be reproduced without the prior written approval of this laboratory. This laboratory is accredited in accordance with the recognised International Standard ISO/IEC 17025:2005. This accreditation demonstrates technical competence for a defined scope and the operation of a laboratory quality management system (refer joint ISO-ILAC-IAF Communiqué dated January 2009)



祥興鑄鐵有限公司  
CHEUNG HING FOUNDRY (HK) LIMITED

# CHF<sup>®</sup> Eco- Cast Iron Hinged Grating with Frame for OTG

生鐵有較承重梳𠵼 (隔氣井地台去水用) 20Ton

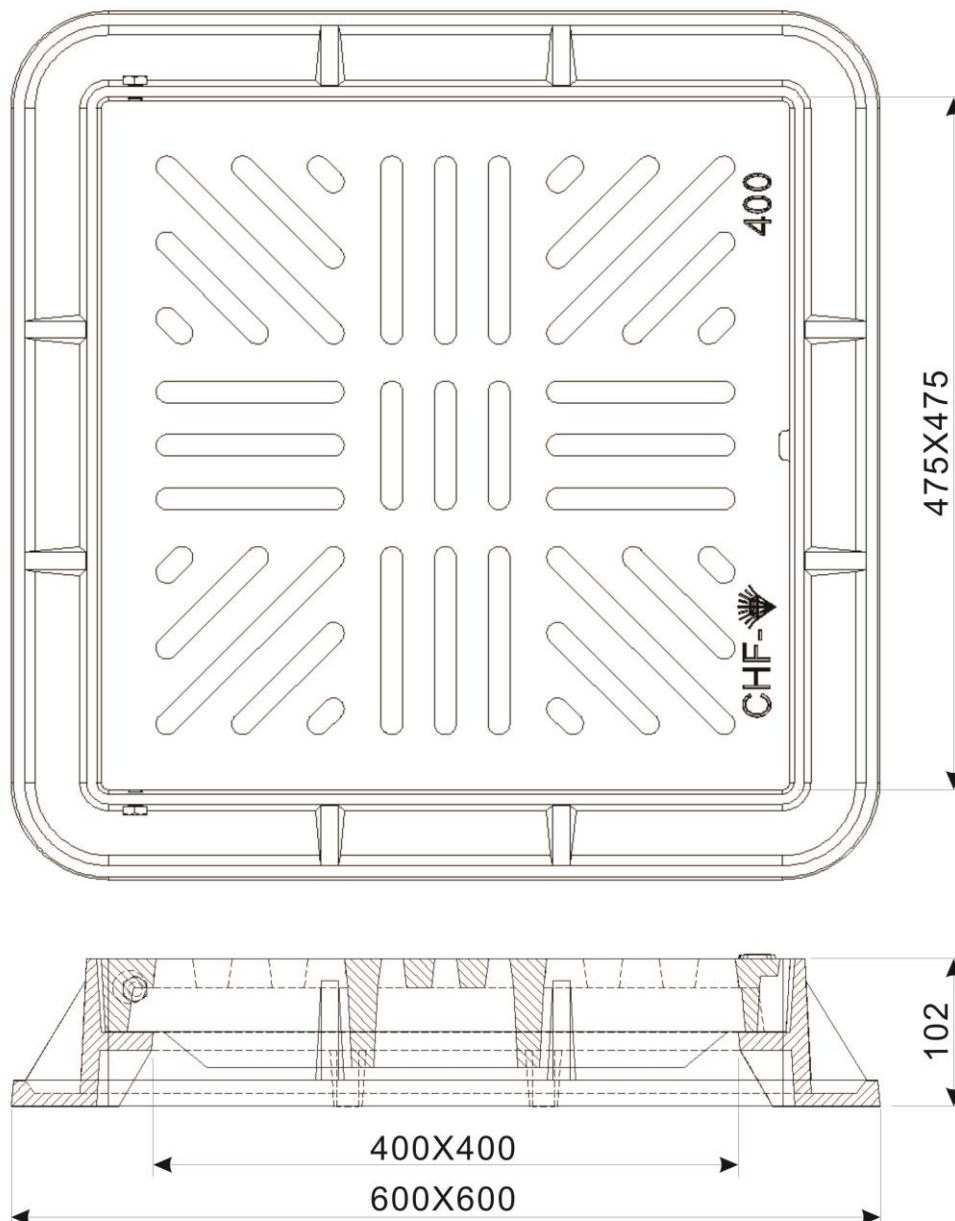
## General Specification for Civil Engineering Works

**Standard:** “General Specification for Civil Engineering Works”

Published by the Civil Engineering and Development Department

The Government of the HKSAR.

Grade	Test load (tons)
Medium duty(M)	5
Heavy duty (H)	20



Note :The above dimensions are for reference only. Please refer to the actual products.



祥興鑄鐵有限公司  
CHEUNG HING FOUNDRY (HK) LIMITED

# CHF<sup>®</sup> Eco-Cast Iron Hinged Grating with Frame for OTG

## 生鐵有較承重梳齒 (隔氣井地台去水用) 20Ton

### General Specification for Civil Engineering Works



## HOKLAS Endorsed Test Certificates

**CASTCO**

佳力高試驗中心有限公司  
CASTCO TESTING CENTRE LTD.

香港粉嶺安居街33號 33, On Kui Street, Fanling, Hong Kong. Tel: 2677 2138  
香港粉嶺安全街29A號 29A, On Chuen Street, Fanling, Hong Kong. Fax: 2677 0351  
E-mail: castco@netvigator.com Website: www.castco.com.hk



Test Certificate

Mass Determination and Loading Test to Cast Iron Drainage Goods  
(Tested to G.S. for C.E. Works : 2006 : Cl. 5.95(2) and Appendix 5.3)

Date of issue : 23 September 2014  
Page 1 of 1 page(s)

Castco LRN : DP0140915-082 MISCEL

Details as supplied by the customer

Customer: Cheung Hing Foundry (HK) Limited  
Address: 299 Pak Sha Tsuen, Kung Um Road, Yuen Long, NT, HK  
Title: --  
Sample Description: 400mm x 102mmH Cast Iron Hinged Grating  
Grade: --

Customer's Ref. No.: --  
Contract No.: --

Laboratory Test Result

Date received: 15 September 2014

Date tested: 20 September 2014

Dia. of bearing block : 300 mm

Specimen No.	Specimen Description	Grade claimed by customer	Measured mass (kg)	Loading Test (Test load maintained for 30 sec)		
				Test load (kN)	Loading test result (passed/failed)	Observation
DP0140915-082	400mm x 102mmH Cast Iron Hinged Grating	--	--	200	Passed	N/V

Legend :

FC - Fracture at cover.

FF - Fracture at frame.

N/V No visible fracture.

Remarks:-

1. Test result relates only to the specimen tested.
2. Compliance of the test results to the specification is an opinion of the laboratory and is not covered under the HOKLAS accreditation.
3. Test results of the sample comply with the requirement of G.S. for C.E. Works : 2006 : Cl. 5.95(2) and Appendix 5.3.
4. Sample Submitted by: Asia Development (HK) Limited.
5. The test load were provided by customer.

Checked by:

SIT KWAN NING  
Laboratory Supervisor

Approved Signatory:

WONG KA MAN  
Laboratory Manager

End of Report

Form No. PIP MANHOLE\_GS\_T2 ed 08/10/2010

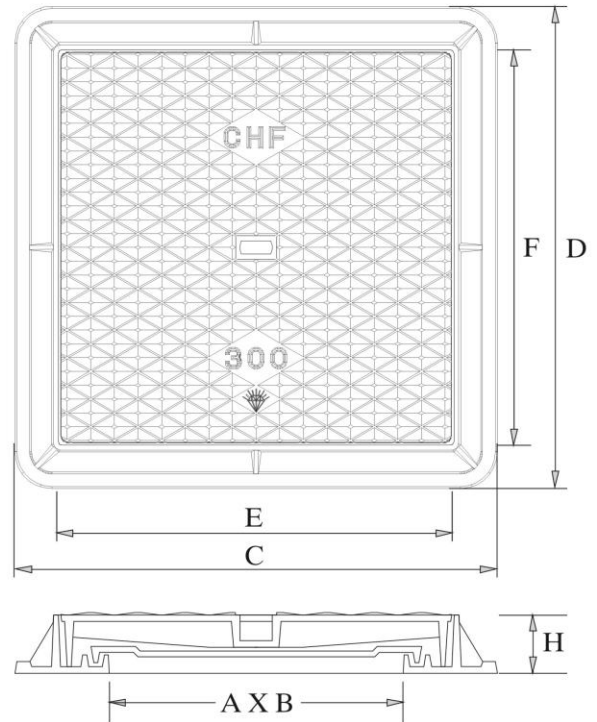
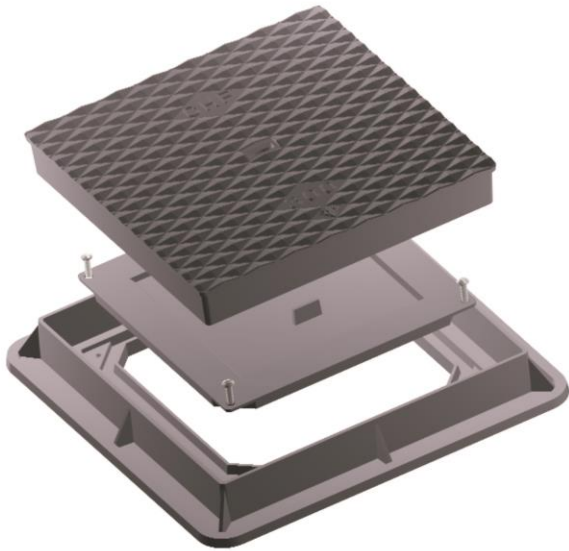
HKAS has accredited this laboratory (Reg. No. 032 - TEST) under HOKLAS for specific laboratory activities as listed in the HOKLAS directory of accredited laboratories. This report shall not be reproduced unless with prior written approval from this laboratory. This laboratory is accredited in accordance with the recognised International Standard ISO/IEC 17025:2005. This accreditation demonstrates technical competence for a defined scope and the operation of a laboratory quality management system (refer joint ISO-ILAC-IAF Communiqué dated January 2009)



祥興鑄鐵有限公司  
CHEUNG HING FOUNDRY (HK) LIMITED

# CHF<sup>®</sup> Eco-Cast Iron Double Seal Solid Cover and Frame (with screws)

## 鑄鐵雙止口螺絲密冚



Code No. 編號	Clear Opening 內孔尺寸 A X B (mm)	Over Base Size 底框尺寸 C X D (mm)	Cover Size 蓋面尺寸 E X F (mm)	Height 高度 H (mm)	Material 材質
EE150	124 X 124	220 X 220	150 X 150	34	** Cast Iron
EE200	140 X 140	280 X 280	200 X 200	35	Comply with
EE300	225 X 225	380 X 380	300 X 300	48	BS EN 1561 EN-GJL-150

\*\* Material- As per the requirement of "General Specification for Civil Engineering Works", HKSAR

Cheung Hing Foundry (HK) Limited reserves the rights to modify the specifications of the products in this catalog without prior notice.



祥興鑄鐵有限公司  
CHEUNG HING FOUNDRY (HK) LIMITED